

Bless the Lord

Words & Music By:

TRAVIS DOUCETTE

Arranged By:

Adam Lancaster

Orchestrated By:

Adam Lancaster and Kyle Bailey

Joyful ♩ = 120

INTRO

Musical notation for the Intro section, measures 1-5. Chords: A, Em7, G, D. Dynamics: *f*.

VERSE

Musical notation for the Verse section, measures 9-24. Chords: A, E, G#, F#m, D, A, A, E, F#m, D, A. Dynamics: *f*. Large watermark text: "redtie MUSIC PREVIEW ONLY not for print".

PRE-CHORUS

Musical notation for the Pre-Chorus section, measures 25-32. Chords: Bm7, C#, G, D. Dynamics: *f*.

CHORUS

Musical notation for the Chorus section, measures 33-36. Chords: A, Em7, G. Dynamics: *f*.

2nd Time to Coda

36 D A Bm7 $\frac{D}{F\#}$

39 G D A Em7

VERSE

45 A E G# E

mf

redtie

49 F#m7 D A G# E

MUSIC

f

PREVIEW ONLY

53 A E G# E

57 F#m D A G# E

D.S. al Coda

f

Φ CODA

61 G

not for print

CHORUS

63 A Em7 G D

67 A Bm7 $\frac{D}{F\#}$ G D

Stop Time-fills
A

A sus

71

BRIDGE

A

D

75

mf

F#m

A
C#

D

79

83

2.

f

Big Time

MUSIC

F#m

A
C#

ff. back to bridge

88

92

D 2.

CHORUS

Big Hits

A

Em7

D

94

ff

Big Time

A

Bm7

G

D

98

CHORUS

A

Em7

G

102

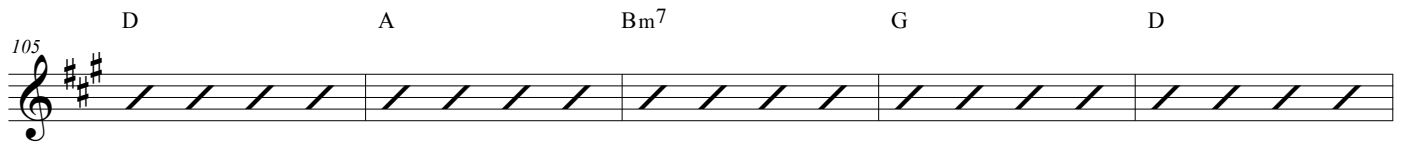
redtie

PREVIEW ONLY

not for print

105

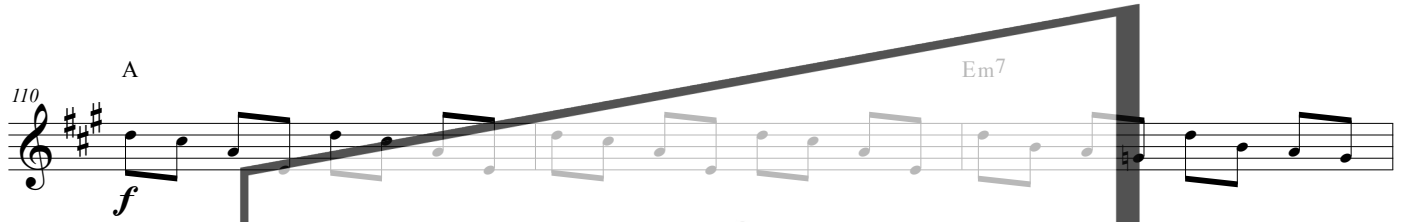
D A Bm⁷ G D



110

A Em⁷

f



113

G



116

D A

M U S I C



redtie

PREVIEW
ONLY

not for print

Bless the Lord

Words & Music By:

TRAVIS DOUCETTE

Arranged By:

Adam Lancaster

Orchestrated By:

Adam Lancaster and Kyle Bailey

Joyful ♩ = 120

INTRO

G

Dm7



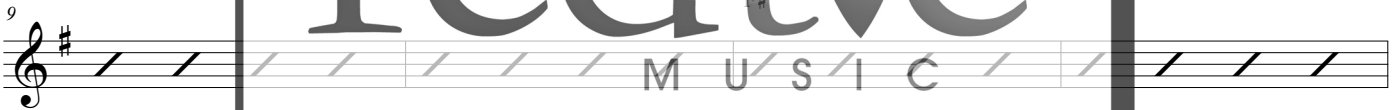
F

f



VERSE

G



E m

C

G



G



E m

C

G



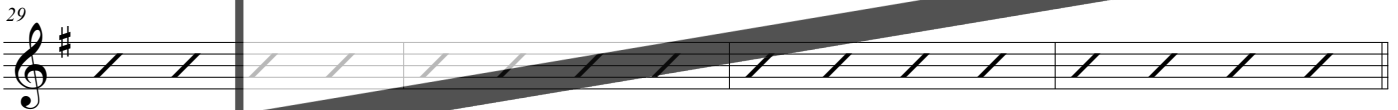
PRE-CHORUS

♩ Am7



F

C



CHORUS

G

Dm7

F



f

2nd Time to Coda

36 C G Am7 $\frac{C}{E}$

Musical staff 36-38 with treble clef, key signature of one sharp (F#), and a series of diagonal slashes representing a rhythmic pattern. Chords C, G, Am7, and C/E are indicated above the staff.

39 F C G Dm7

Musical staff 39-44 with treble clef, key signature of one sharp (F#), and a series of diagonal slashes representing a rhythmic pattern. Chords F, C, G, and Dm7 are indicated above the staff. The staff contains some musical notation starting from measure 41.

VERSE

45 G D F# D

Musical staff 45-48 with treble clef, key signature of one sharp (F#), and a series of diagonal slashes representing a rhythmic pattern. Chords G, D, F#, and D are indicated above the staff. The dynamic marking *mf* is present.

49 Em7 C G M U S I C

Musical staff 49-52 with treble clef, key signature of one sharp (F#), and a series of diagonal slashes representing a rhythmic pattern. Chords Em7, C, and G are indicated above the staff. The word "MUSIC" is written in large letters across the staff. The dynamic marking *f* is present.

53 G D F# D

Musical staff 53-56 with treble clef, key signature of one sharp (F#), and a series of diagonal slashes representing a rhythmic pattern. Chords G, D, F#, and D are indicated above the staff.

57 Em C G D.S. al Coda

Musical staff 57-60 with treble clef, key signature of one sharp (F#), and a series of diagonal slashes representing a rhythmic pattern. Chords Em, C, and G are indicated above the staff. The dynamic marking *f* is present. The instruction "D.S. al Coda" is written at the end of the staff.

⊕ CODA

61 F

Musical staff 61-62 with treble clef, key signature of one sharp (F#), and a series of diagonal slashes representing a rhythmic pattern. Chord F is indicated above the staff.

CHORUS

63 Dm7 F C

Musical staff 63-66 with treble clef, key signature of one sharp (F#), and a series of diagonal slashes representing a rhythmic pattern. Chords Dm7, F, and C are indicated above the staff.

67 G Am7 $\frac{C}{E}$ F C

Musical staff 67-70 with treble clef, key signature of one sharp (F#), and a series of diagonal slashes representing a rhythmic pattern. Chords G, Am7, C/E, F, and C are indicated above the staff.



Rhythm

Stop Time-fills
G

Gsus

71

BRIDGE

G

C

75

Em

G/B

C

79

redtie

1.

83

Big Time

MUSIC

PREVIEW ONLY

Em

1. back to bridge

88

C 2.

92

CHORUS

Big Hits

G

Dm7

F

C

94

Big Time

G

Am7

F

C

98

CHORUS

G

Dm7

F

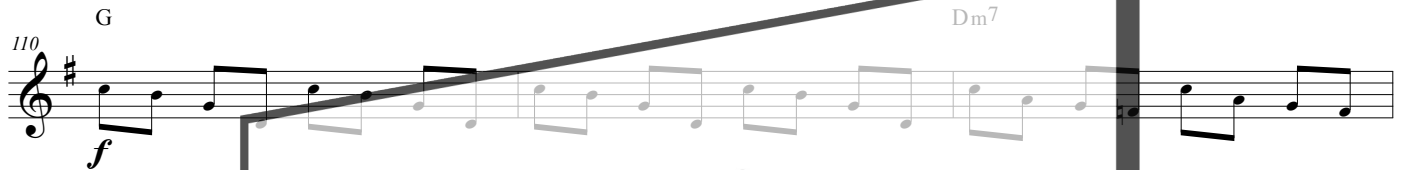
102

105 C G Am⁷ F C



110 G Dm⁷

f



113 F



116 C G



redtie

MUSIC

PREVIEW
ONLY

not for print